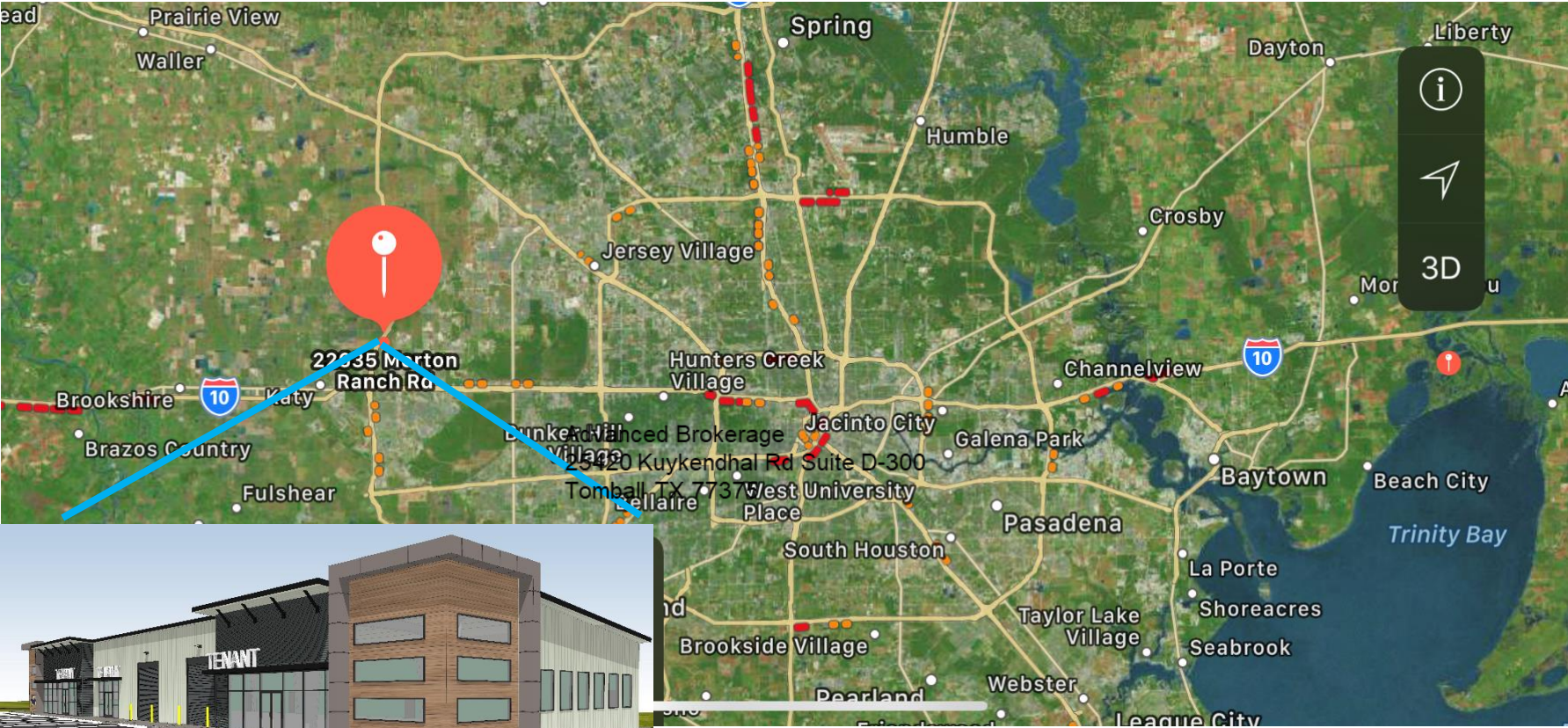


Morton Business Park

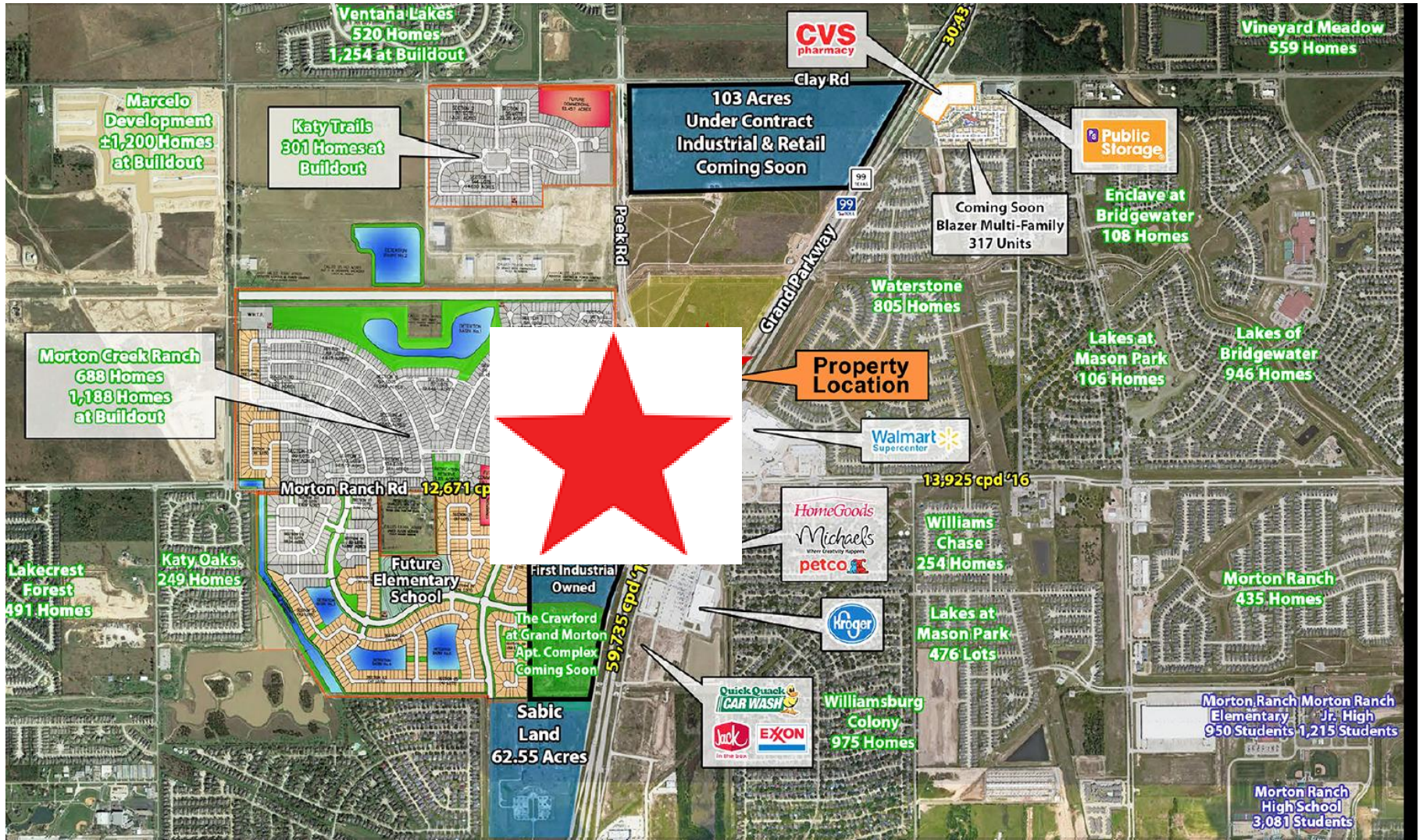
23125 Morton Ranch, Katy TX 77493



FOR LEASE
+/- 30,000 SF Office- Warehouse Space
UNDER CONSTRUCTION

Morton Business Park

23125 Morton Ranch, Katy TX 77493



Morton Business Park

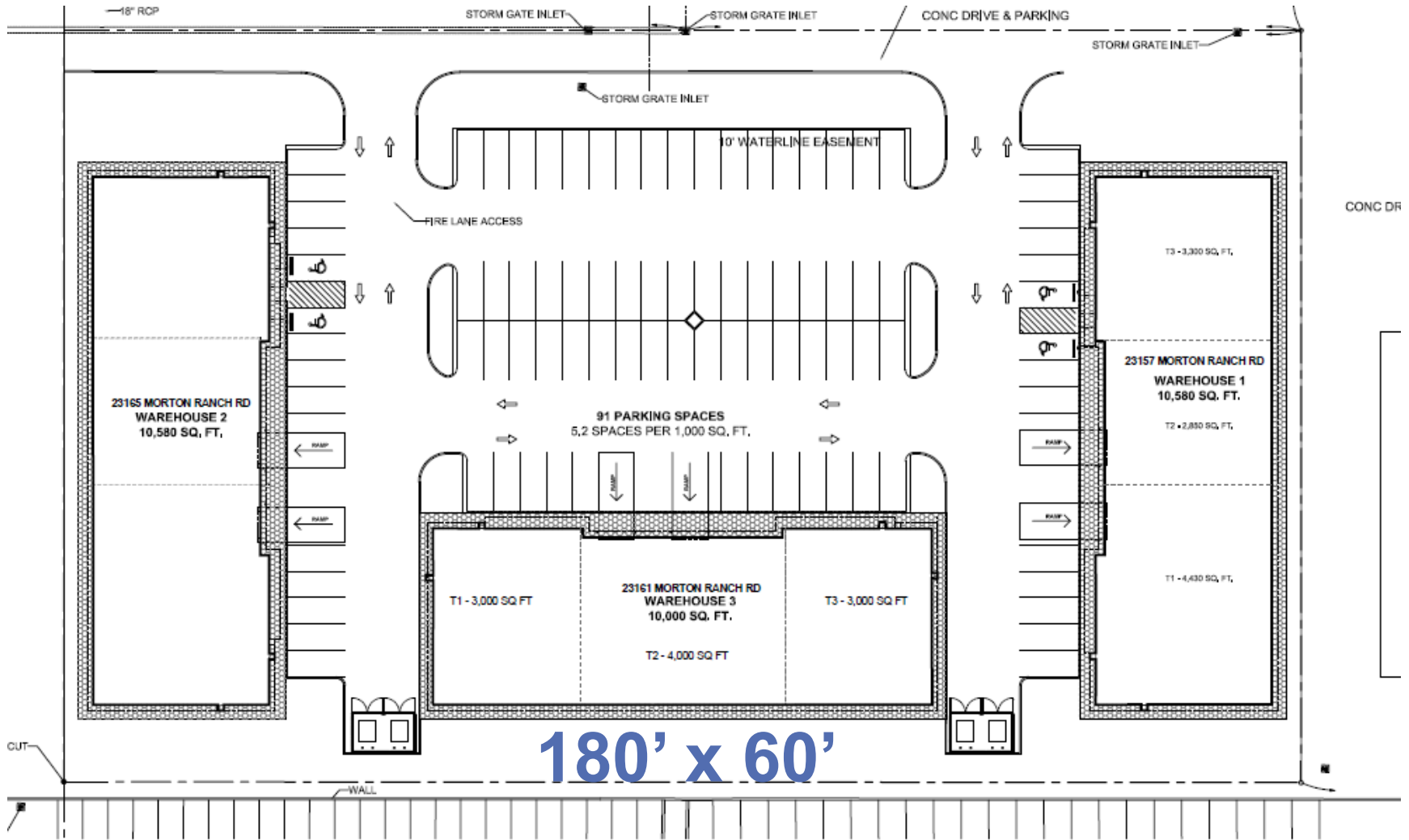
23125 Morton Ranch, Katy TX 77493



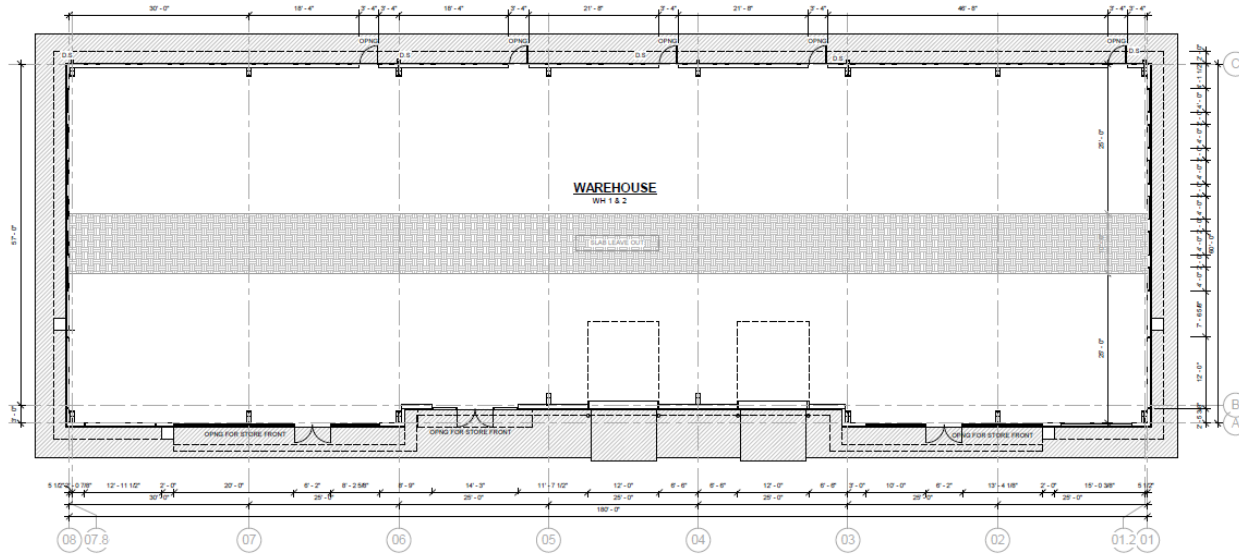
Morton Business Park

Morton Business Park

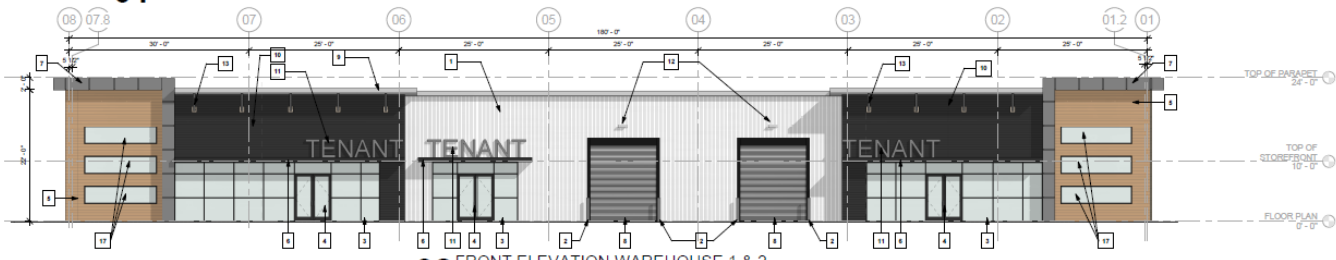
23125 Morton Ranch, Katy TX 77493



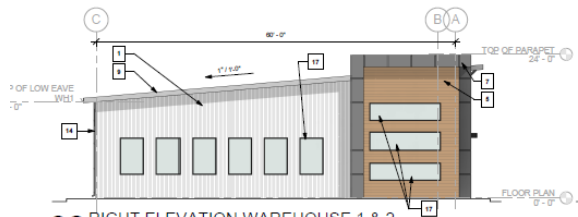
Morton Business Park



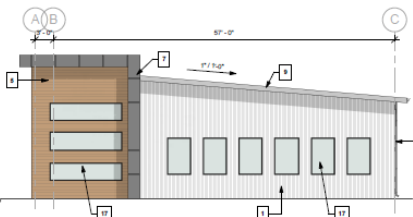
01 FLOOR PLAN WAREHOUSE 1 & 2
1/8" = 1'-0"



02 FRONT ELEVATION WAREHOUSE 1 & 2
1/8" = 1'-0"



03 RIGHT ELEVATION WAREHOUSE 1 & 2
1/8" = 1'-0"



04 LEFT ELEVATION WAREHOUSE 1 & 2
1/8" = 1'-0"

ELEVATION NOTES			
11	1/2" CORRUGATED METAL SIDING R PANEL	11	SIGN LOCATION FOR FUTURE TENANT
12	6" CONCRETE FILLED BOLLARD STEEL PIPE PAINT WITH YELLOW TRAFFIC PAINT	12	WALL PACKS LIGHTING
13	2" INSULATED LOW GLASS ALUMINUM STOREFRONT FRAME BLACK COLOR	13	METAL EXTRUDED TUBE FOR ROOF TO WALL PROFILE
14	DOUBLE DOOR CLEAR GLASS ALUMINUM STOREFRONT FRAME BLACK COLOR	14	METAL DOWNPOUT WITH FINISH SS FRASH PROVIDE BY METAL BUILDING COMPANY. COLOR TO BE MATCH BUILDING
15	NEWTECHWOOD - ALL WEATHER SIDING - PERUVIAN TEAK COLOR	15	EXTERIOR INSULATED DOOR 18 GA. HOLLOW METAL AND FRAMES PAINT
16	PRE MANUFACTURED ALUMINUM CANOPY - COLOR BLACK	16	TRANSLUCED PANEL COLOR BY OWNER
17	STUCCO WING - WITH 2" REVEALS @ 40 C. AS SHOWN	17	FIXED ALUMINUM WINDOWS WITH BLACK COLOR - DOUBLE PANEL WITH LOW E
18	OVERHEAD DOOR 12'-0" WIDE X 14'-0" HIGH. CHAIN OPERATED	18	POLYCARBONATE PANEL - TRANSLUCENT
19	GALVANIZED METAL ROOF PANELS BY METAL BUILDING NAME		
20	BERRIDGE HR 18 PANELS - HORIZONTAL - COLOR BUCKSKIN		

Morton Business Park

23125 Morton Ranch, Katy TX 77493



		Lease Rate	NNN	Tenant
Suite Sizes	Square Footage	Per Month PSF	Per Month PSF	Improvements
Maximun Size	10,000	\$ 1.00	\$ 0.25	\$ 15.00
Xlarge	7,500	\$ 1.00	\$ 0.25	\$ 15.00
Medium	5,000	\$ 1.10	\$ 0.25	\$ 15.00
Small	2,500	\$ 1.10	\$ 0.25	\$ 15.00